



THE ASCEND™ PLATFORM INSTALLATION INSTRUCTIONS

This document describes the recommended use of the ASCEND Platform.

TABLE OF CONTENTS

RACK MOUNTING	1
CASSETTE INSTALLATION	2
PATCH CORD INSTALLATION	2
TRUNK CABLE INSTALLATION	3
LC UNIBOOT REVERSIBILITY	3
MTP® PRO REVERSIBILITY	3

RACK MOUNTING

MATERIALS



- 1. ASCEND Housing
- 2. Rack Mounting Hardware

INSTRUCTIONS

The ASCEND housing is optimized for use with a 19" rack or cabinet with standard rails that meet the EIA/ECA Standard for Cabinets, Racks, Panels, and Associated Equipment. Note that mounting in a 23" rack requires an optional mounting hardware kit. It is recommended to start from the bottom of the rack or cabinet if the intention is to completely fill the rack or cabinet with ASCEND housings.

1. Determine the desired RU on which to mount the housing within the rack or cabinet.
2. Partially install two positioning screws at the lowest position within the selected RU on the rack. Be sure to leave enough space between the head of the screw and the rack rail to accommodate the thickness of the housing mounting brackets.
3. Place the housing between the rails on the rack while aligning the bottom slots of the mounting bracket over the partially installed mounting screws. Once aligned over the screws, the weight of the housing can be released. Install additional screws to the mounting bracket for stability.
4. Tighten all screws completely (Figure 1).



Figure 1

CASSETTE INSTALLATION

This installation guide is applicable for any ASCEND cassette. Cassettes can be inserted from the front or rear of the housing. It is recommended to begin cassette installation from the bottom and fully populate each tray before moving upward.

FRONT INSTALLATION INSTRUCTIONS

1. Pull out the desired installation tray. A hard stop will be felt when the tray reaches the correct installation position (Figure 2).
2. Relative to the front of the cassette, push in on the cassette's release lever to ensure it is engaged (Figure 3).
3. Align the cassette within the guides inside of the tray and push the cassette into the tray (Figure 4).
4. To release the cassette from the front of the tray, pull out on the release lever and slide the cassette out of the tray guides (Figure 5).

Note: If desired, a hook tool can be placed in the hole on the release lever to assist in removing the cassette from the tray. Use extreme caution and care if using this method.

5. Re-engage the release lever to insert the cassette back into the tray. A click should be heard when the lever is re-engaged.



Figure 2

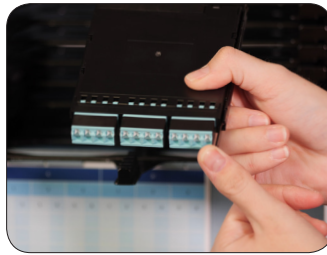


Figure 3



Figure 4



Figure 5

REAR INSTALLATION INSTRUCTIONS

1. Ensure that the front door of the housing is closed.
2. Open the rear door of the housing.
3. For easier access to trays, remove the rear housing cover by unscrewing the two thumbscrews (Figure 6).
4. Relative to the front of the cassette, push in on the cassette's release lever to ensure it is engaged (Figure 7).
5. Align the cassette with the guides inside of the tray and push the cassette into the tray (Figure 8).
6. To release the cassette from the rear of the tray, push forward on the release lever and slide the cassette back toward you (Figure 9).
7. Re-engage the release lever to insert the cassette back into the tray. A click should be heard when the lever is re-engaged.



Figure 6



Figure 7



Figure 8

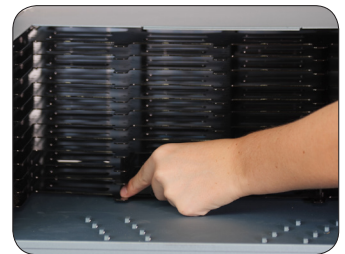


Figure 9

PATCH CORD INSTALLATION

1. Pull out the desired installation tray. A hard stop will be felt when the tray reaches the correct installation position.
2. While holding the extension tab on the latch mechanism, plug the connector in to the desired port by pushing on the latch mechanism (Figure 10).
3. Route the cable one at a time through the organizing rings (Figure 11).

Note: Each ring is designated to a cassette. Patch cords, plugged in to the cassette nearest the exit to the vertical cable management, are routed through the ring closest to the cassette. Patch cords plugged in to the second cassette are routed through the ring second closest to the cassette, and so forth.

Note: The cables can all be routed to one side of the housing, or can be split by routing half to the left and half to the right of the housing.

4. To remove the connector, pull on the latch mechanism (Figure 12).



Figure 10



Figure 11



Figure 12

TRUNK CABLE INSTALLATION

1. If desired, remove the rear housing cover by unscrewing the two thumbscrews (Figure 6).
2. Bring the trunk cable in through the desired side of the ASCEND housing.
3. Snap the retention clip onto the bridge lance forms, an audible click should be heard when installed correctly. It is recommended when using multiple trunk cables to begin your installation at the bridge lance forms closest to the trays and progress toward the rear of the housing (Figure 13).
4. If it is required to release the retention clip, push down on the lever and slide the clip out from the lance forms (Figure 14).
5. With the retention clip snapped into place, route the fiber in an S-shape manner to make the connections to the cassettes (Figure 15).
6. Loosely applying Velcro to fiber groups provides further cable management and organization (Figure 16).
7. To provide ease in cable routing, each row should be fully populated beginning with the bottom most tray before moving upward to the next (Figure 17).

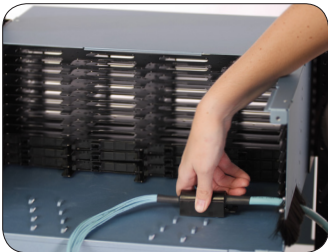


Figure 13

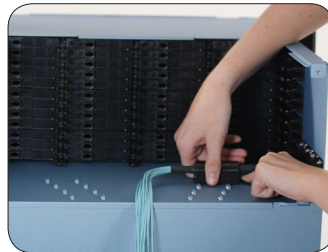


Figure 14

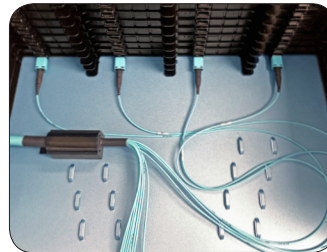


Figure 15



Figure 16

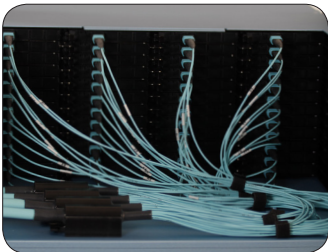


Figure 17

LC UNIBOOT REVERSIBILITY

1. Flip the connector over so that you are looking at the white body of the connector (Figure 18).
2. Unlatch the push-pull tab from the body of the connector by pushing the tab in the slot to the left (Figure 19).
3. Pull the push-pull tab away from the body of the connector (Figure 20).
4. Once the push-pull tab has been removed from the body, reinsert the tab on the opposite side of the connector body (Figure 21).



Figure 18



Figure 19

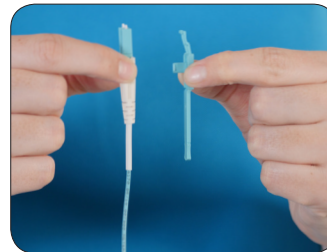


Figure 20



Figure 21

MTP® PRO REVERSIBILITY*

FEMALE-TO-MALE GENDER CHANGE

1. Place the connector inside of the port on the MTP Pro Field Tool that is labeled "pin." A click should be heard (Figure 22).
2. Remove the pin holder from the MTP Pro Field Tool. Ensure that the holder is populated with pins (Figure 23).
3. Place the pin holder inside of the port labeled "Exchanger" (Figure 24).
4. Remove the pin holder (Figure 25).
5. Remove the connector.



Figure 22



Figure 23



Figure 24



Figure 25

MALE-TO-FEMALE GENDER CHANGE

1. Place the connector inside of the port on the MTP Pro Field Tool that is labeled "pin." A click should be heard (Figure 26).
2. Remove the empty pin holder from the MTP Pro Field Tool (Figure 27).
3. Place the pin holder inside of the port labeled "Exchanger" (Figure 28).
4. Slide the green tool (included with the MTP Pro Field Tool) onto the pin holder (Figure 29).
5. Squeeze down on the MTP Pro Field Tool (Figure 30).
6. Squeeze the handles on the green tool (Figure 31).
7. Pull the pin holder out of the port (Figure 32).
8. Release the MTP Pro Field Tool (Figure 33).
9. Remove the connector from the port.



Figure 26



Figure 27



Figure 28



Figure 29



Figure 30



Figure 31



Figure 32



Figure 33

POLARITY CHANGE

1. Insert the connector key up into the port on the MTP Pro Field Tool that is labeled "Polarity." A click will be heard when the connector is properly installed (Figure 34).
2. Remove the connector from the port.



Figure 34

*These instructions apply to Multimode applications only